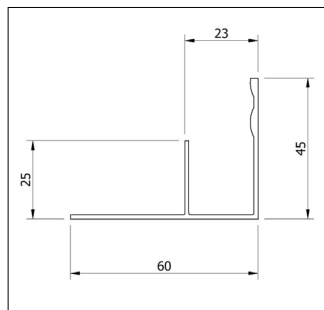


# EXTRUSIONS



**THERMAL**  
**PANEL SOLUTIONS**  
THE TRUSTED NAME IN CONTROLLED ENVIRONMENTS



## Description:

F Mould  
 at 6500mm lengths

## Finish:

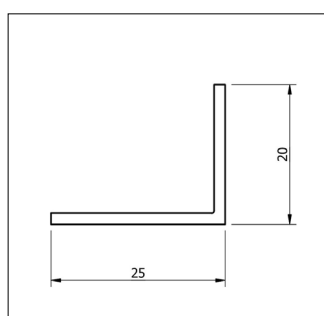
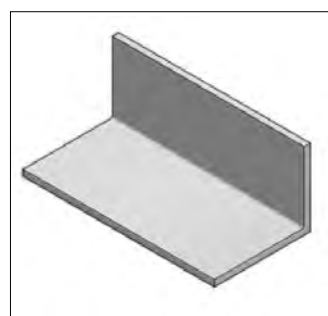
Mill  
 Surfmist  
 Custom

## Product Code:

2101  
 2101W

## Unit:

Length  
 Length  
 Length

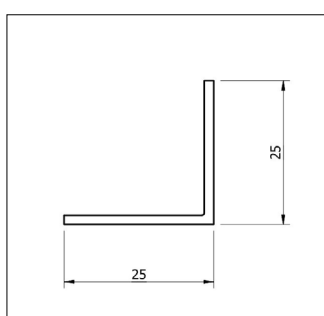
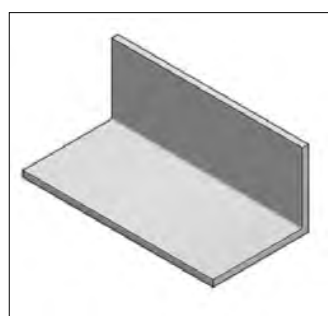


25x20x1.6 Angle  
 at 6500mm lengths

Mill  
 Surfmist  
 Custom

2102  
 2102W

Length  
 Length  
 Length

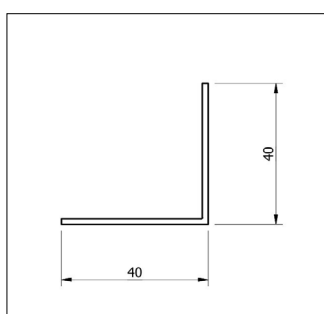
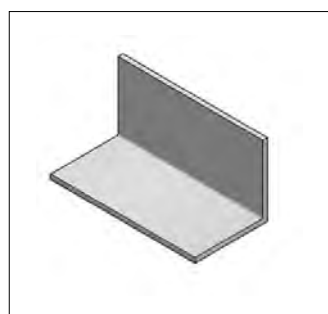


25x25x1.6 Angle  
 at 6500mm lengths

Mill  
 Surfmist  
 Custom

2013  
 2103W

Length  
 Length  
 Length



40x40x1.6 Angle  
 at 6500mm lengths

Mill  
 Surfmist  
 Custom

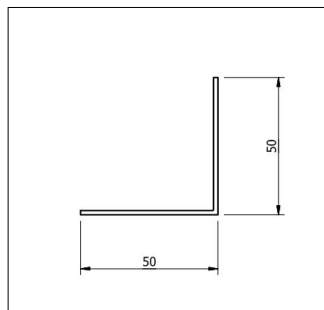
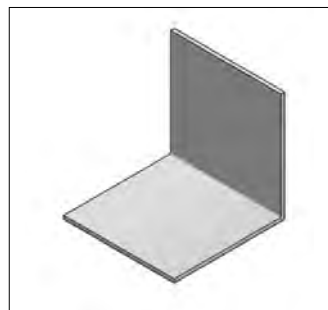
2104  
 2104W

Length  
 Length  
 Length

# EXTRUSIONS



**THERMAL**  
**PANEL SOLUTIONS**  
THE TRUSTED NAME IN CONTROLLED ENVIRONMENTS



## Description:

50x50x1.6 Angle  
 at 6500mm lengths

## Finish:

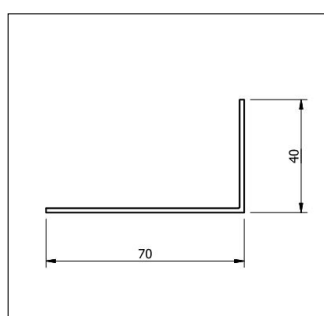
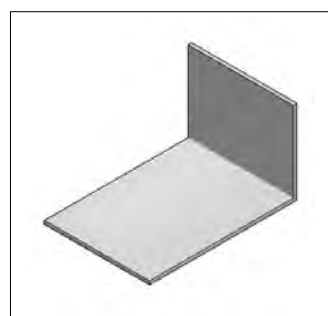
Mill  
 Surfmist  
 Custom

## Product Code:

2105  
 2105W

## Unit:

Length  
 Length  
 Length

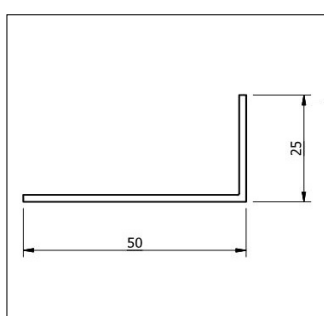
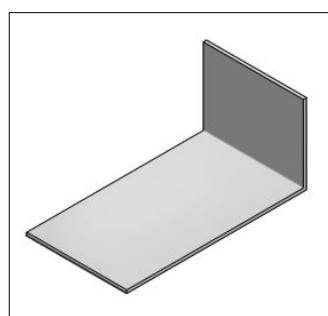


70x40x1.6 Angle  
 at 6500mm lengths

Mill  
 Surfmist  
 Custom

2107  
 2107W

Length  
 Length  
 Length

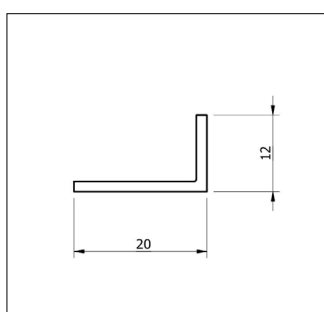
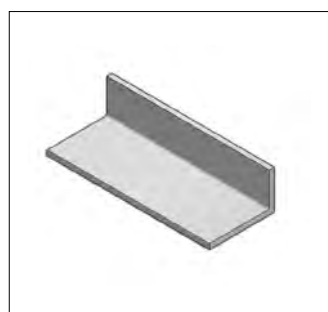


50x25x1.6 Angle  
 at 6500mm lengths

Mill  
 Surfmist  
 Custom

2108  
 2108W

Length  
 Length  
 Length



20x12x1.6 Angle  
 at 6500mm lengths

Mill  
 Surfmist  
 Custom

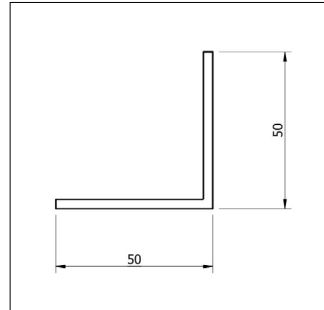
2112  
 2112W

Length  
 Length  
 Length

# EXTRUSIONS



**THERMAL**  
**PANEL SOLUTIONS**  
THE TRUSTED NAME IN CONTROLLED ENVIRONMENTS



## Description:

50x50x3 Angle  
 at 6500mm lengths

## Finish:

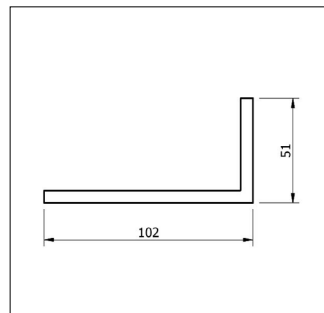
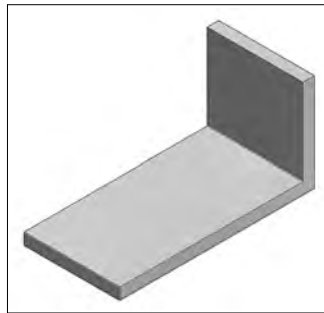
Mill  
 Surfmist  
 Custom

## Product Code:

2135  
 2135W

## Unit:

Length  
 Length  
 Length

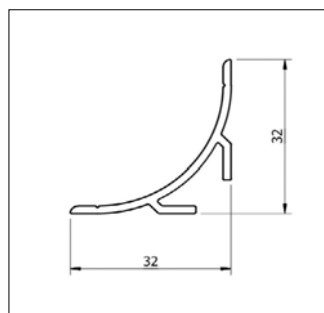


100x50x6 Angle  
 at 6500mm lengths

Mill  
 Surfmist  
 Custom

2169  
 2169W

Length  
 Length  
 Length

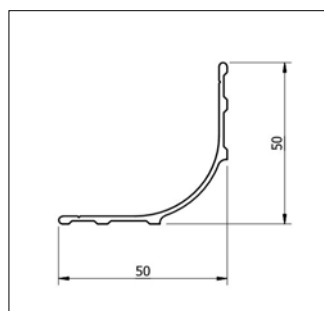


32mm Radius Cove  
 at 6500mm lengths

Mill  
 Surfmist  
 Custom

2201  
 2201W

Length  
 Length  
 Length



50mm Radius Cove  
 at 6500mm lengths

Mill  
 Surfmist  
 Custom

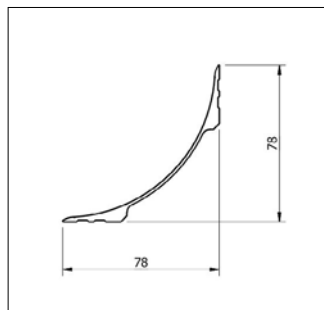
2202  
 2202W

Length  
 Length  
 Length

# EXTRUSIONS



**THERMAL**  
**PANEL SOLUTIONS**  
THE TRUSTED NAME IN CONTROLLED ENVIRONMENTS



## Description:

75mm Radius Cove  
 at 6500mm lengths

## Finish:

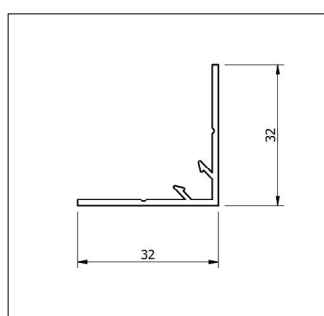
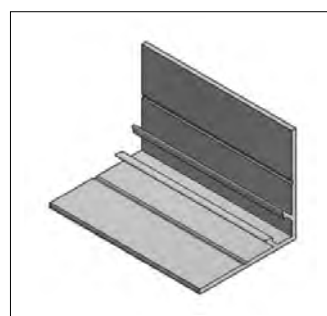
Mill  
 Surfmist  
 Custom

## Product Code:

2203  
 2203W

## Unit:

Length  
 Length  
 Length

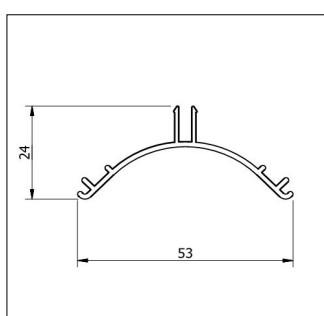
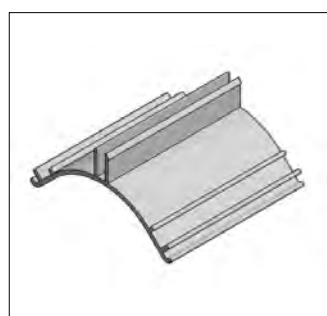


Clip In Cove - Female Angle  
 at 6500mm lengths

Mill  
 Surfmist  
 Custom

2205  
 2205W

Length  
 Length  
 Length

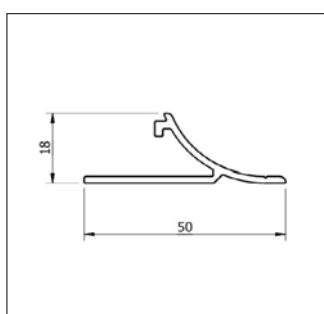


Clip In Cove - Male - Radius  
 at 6500mm lengths

Mill  
 Surfmist  
 Custom

2206  
 2206W

Length  
 Length  
 Length



Concrete Cove  
 at 6500mm lengths

Mill  
 Surfmist  
 Custom

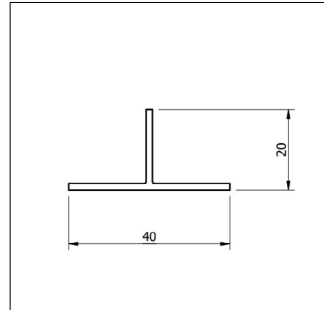
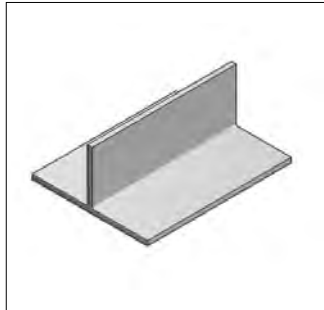
2210  
 2210W

Length  
 Length  
 Length

# EXTRUSIONS



**THERMAL**  
**PANEL SOLUTIONS**  
THE TRUSTED NAME IN CONTROLLED ENVIRONMENTS



## Description:

40x20x1.6 'T' Section  
 at 6500mm lengths

## Finish:

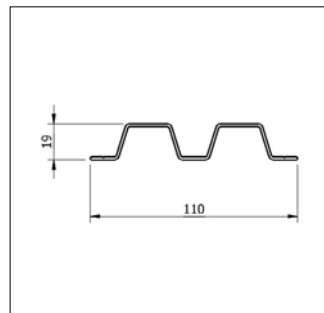
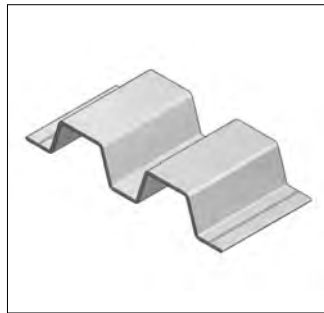
Mill  
 Surfmist  
 Custom

## Product Code:

2242  
 2242W

## Unit:

Length  
 Length  
 Length

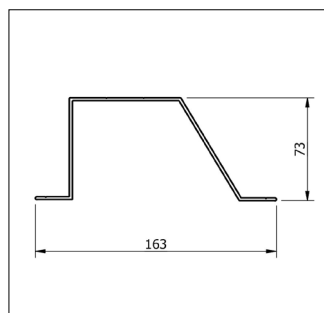
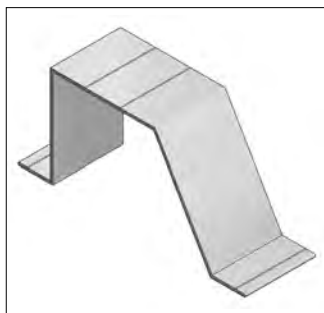


Bump Rail Alcan  
 at 6500mm lengths

Mill  
 Surfmist  
 Custom

2250  
 2250W

Length  
 Length  
 Length

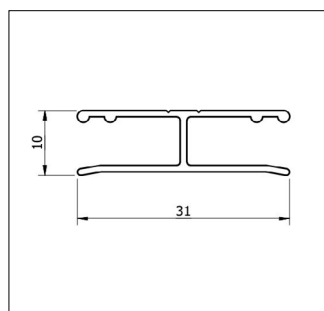
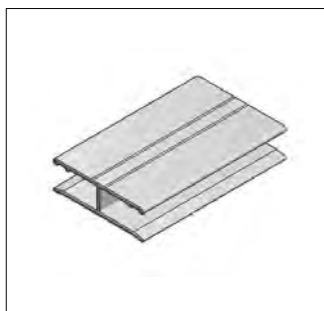


Bump Rail Coles  
 at 6500mm lengths

Mill  
 Surfmist  
 Custom

2260  
 2260W

Length  
 Length  
 Length



Joiner Mould  
 at 6500mm lengths

Mill  
 Surfmist  
 Custom

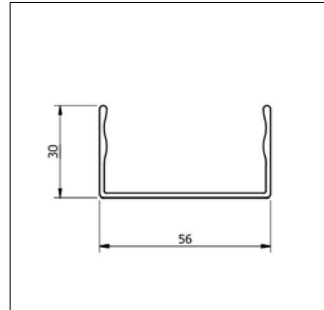
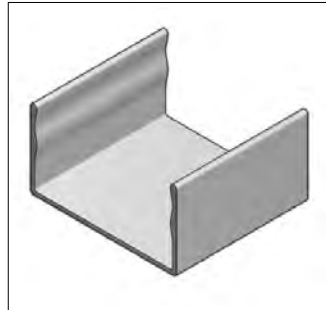
2290  
 2290W

Length  
 Length  
 Length

# EXTRUSIONS



**THERMAL**  
**PANEL SOLUTIONS**  
THE TRUSTED NAME IN CONTROLLED ENVIRONMENTS



## Description:

56x30 Channel - 50mm  
 at 6500mm lengths

## Finish:

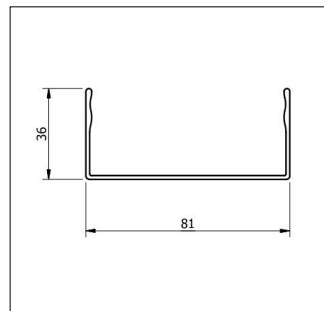
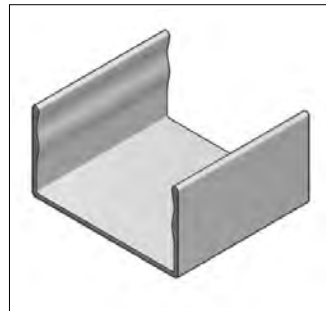
Mill  
 Surfmist  
 Custom

## Product Code:

2302  
 2302W

## Unit:

Length  
 Length  
 Length

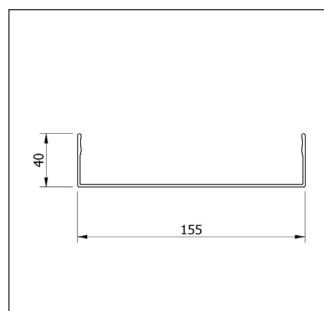
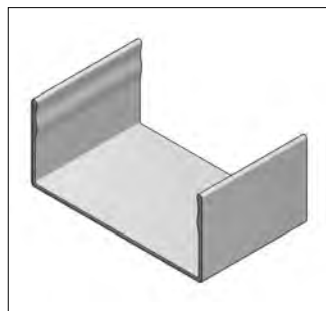


81x36 Channel - 75mm  
 at 6500mm lengths

Mill  
 Surfmist  
 Custom

2303  
 2303W

Length  
 Length  
 Length

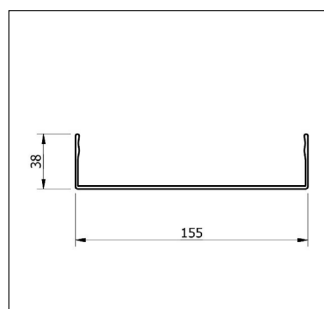


105x36 Channel - 100mm  
 at 6500mm lengths

Mill  
 Surfmist  
 Custom

2304  
 2304W

Length  
 Length  
 Length



155x40 Channel - 150mm  
 at 6500mm lengths

Mill  
 Surfmist  
 Custom

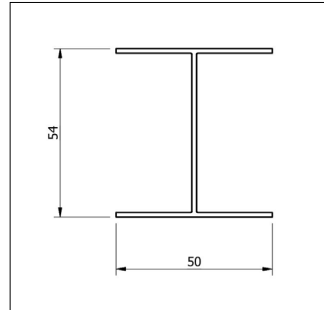
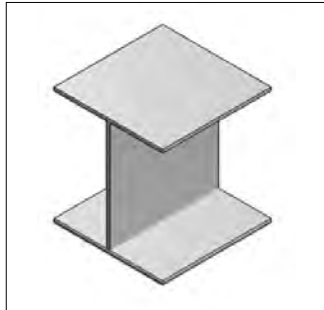
2306  
 2306W

Length  
 Length  
 Length

# EXTRUSIONS



**THERMAL**  
**PANEL SOLUTIONS**  
THE TRUSTED NAME IN CONTROLLED ENVIRONMENTS



## Description:

50mm 'I' Beam  
 at 6500mm lengths

## Finish:

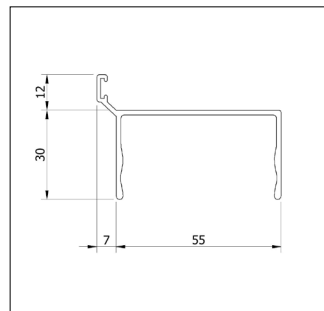
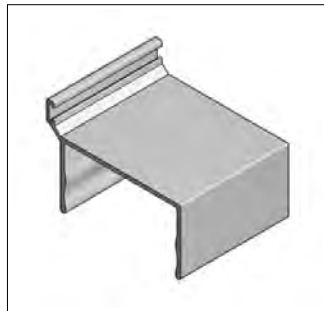
Mill  
 Surfmist  
 Custom

## Product Code:

2312  
 2312W

## Unit:

Length  
 Length  
 Length

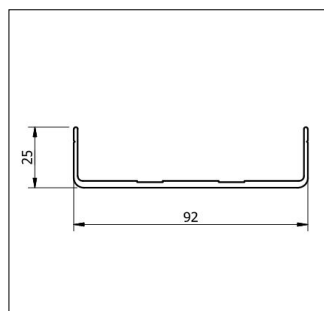
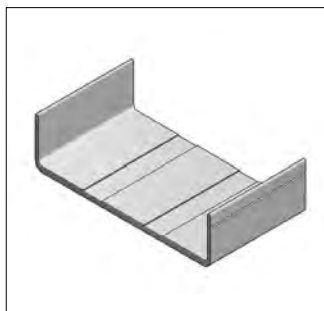


55x30 Asset Channel  
 at 6500mm lengths

Mill  
 Surfmist  
 Custom

2402  
 2402W

Length  
 Length  
 Length

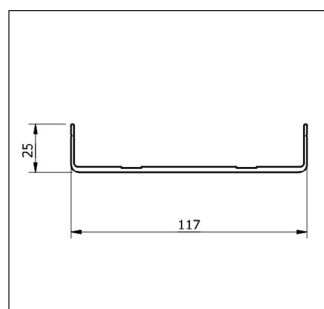


92x25x3 Door Channel  
 at 6500mm lengths

Mill  
 Surfmist  
 Custom

2403  
 2403W

Length  
 Length  
 Length



117x25x3 Door Channel  
 at 6500mm lengths

Mill  
 Surfmist  
 Custom

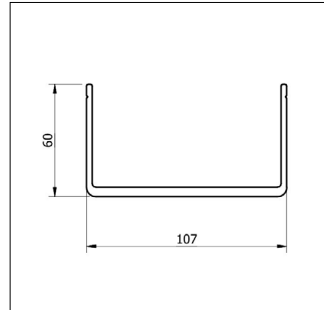
2404  
 2404W

Length  
 Length  
 Length

# EXTRUSIONS



**THERMAL**  
**PANEL SOLUTIONS**  
THE TRUSTED NAME IN CONTROLLED ENVIRONMENTS



## Description:

Mushroom Channel  
 at 6500mm lengths

## Finish:

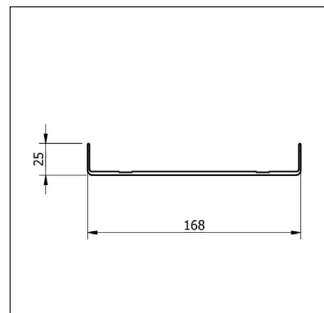
Mill  
 Surfmist  
 Custom

## Product Code:

2404-MR

## Unit:

Length  
 Length  
 Length

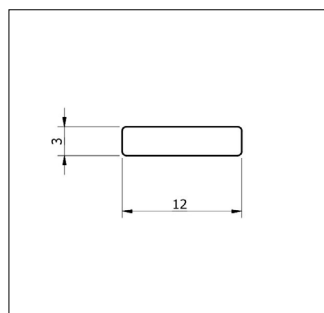
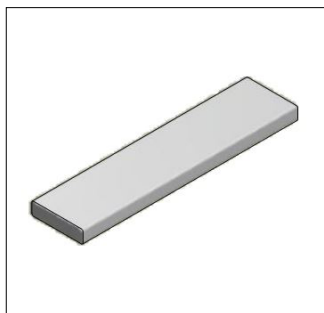


168x25x3 Door Channel  
 at 6500mm lengths

Mill  
 Surfmist  
 Custom

2406  
 2406W

Length  
 Length  
 Length

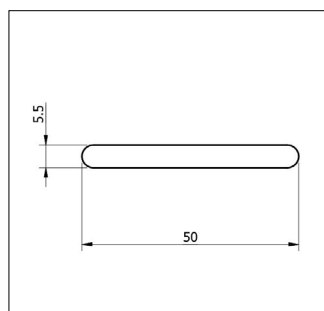


Flat Bar 12x3  
 at 6500mm lengths

Mill  
 Surfmist  
 Custom

2412  
 2412W

Length  
 Length  
 Length



Flat Bar 50x5.5 Buss Bar  
 at 6500mm lengths

Mill  
 Surfmist  
 Custom

2417  
 2417W

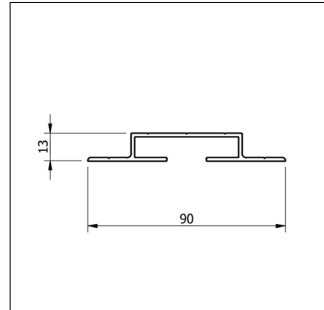
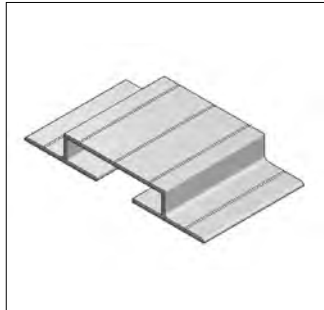
Length  
 Length  
 Length



# EXTRUSIONS



**THERMAL**  
**PANEL SOLUTIONS**  
THE TRUSTED NAME IN CONTROLLED ENVIRONMENTS



## Description:

Hinge Beam  
 at 6500mm lengths

## Finish:

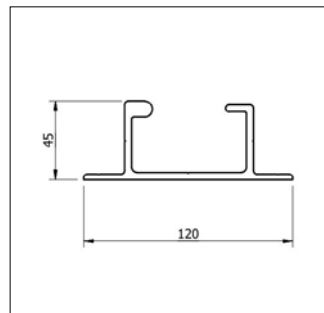
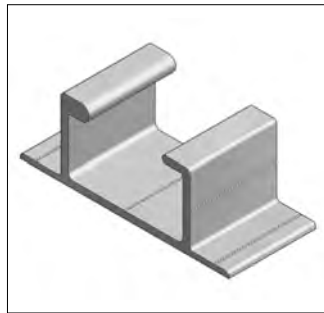
Mill  
 Surfmist  
 Custom

## Product Code:

2423  
 2423W

## Unit:

Length  
 Length  
 Length

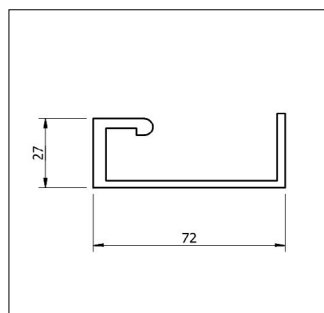


Double 'J' Track  
 at 6500mm lengths

Mill  
 Surfmist  
 Custom

2424  
 2424W

Length  
 Length  
 Length

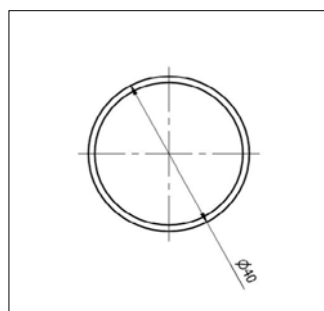


Door 'G' Track Small  
 at 6500mm lengths

Mill  
 Surfmist  
 Custom

2429  
 2429W

Length  
 Length  
 Length



40mm Tube Handle  
 at 6500mm lengths

Mill  
 Surfmist  
 Custom

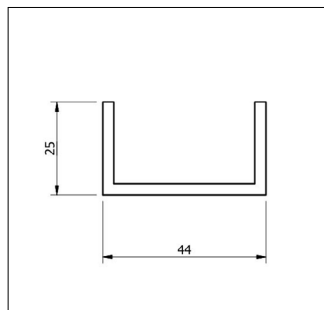
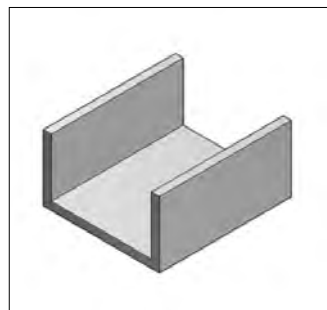
2440  
 2440W

Length  
 Length  
 Length

# EXTRUSIONS



**THERMAL**  
**PANEL SOLUTIONS**  
THE TRUSTED NAME IN CONTROLLED ENVIRONMENTS



## Description:

44x25x3 Channel  
 at 6500mm lengths

## Finish:

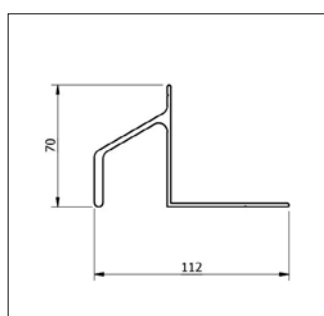
Mill  
 Surfmist  
 Custom

## Product Code:

2444  
 2444W

## Unit:

Length  
 Length  
 Length

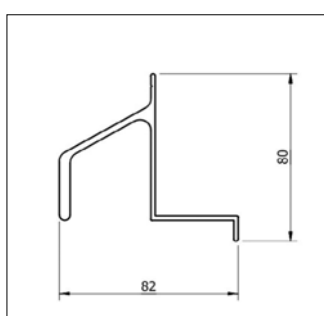


Silless Guide Channel  
 at 6500mm lengths

Mill  
 Surfmist  
 Custom

2445  
 2445W

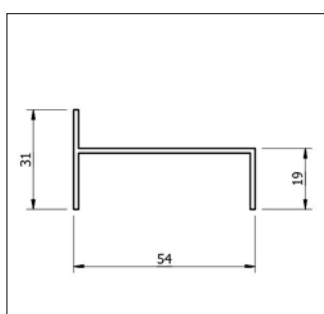
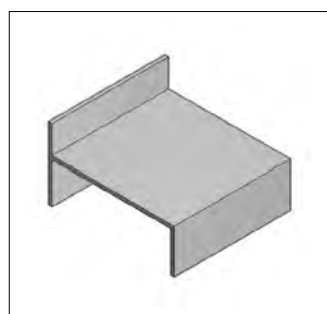
Length  
 Length  
 Length



Silless Guide Channel - 50mm  
 at 6500mm lengths

Mill  
 Surfmist  
 Custom

Length  
 Length  
 Length



55x31 Annex Jamb  
 at 6500mm lengths

Mill  
 Surfmist  
 Custom

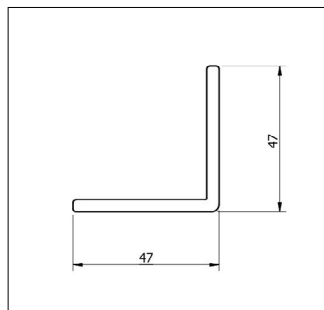
2446  
 2446W

Length  
 Length  
 Length

# EXTRUSIONS



**THERMAL**  
**PANEL SOLUTIONS**  
THE TRUSTED NAME IN CONTROLLED ENVIRONMENTS



**Description:**

47x47x4 PVC AM102 Angle Grey  
 at 6500mm lengths

**Finish:**

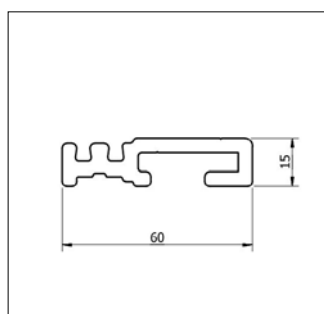
Mill  
 Surfmist  
 Custom

**Product Code:**

2450

**Unit:**

Length  
 Length  
 Length



Grey PVC Breaker SA133  
 at 6500mm lengths

Mill  
 Surfmist  
 Custom

2460

Length  
 Length  
 Length

# EPS-FR PANEL

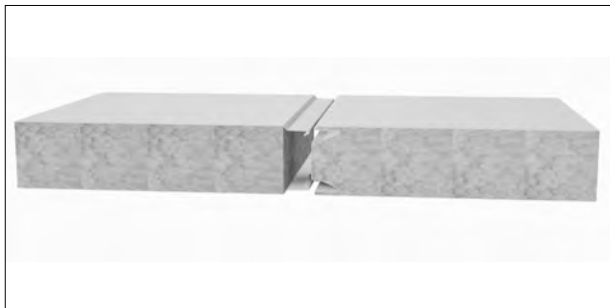
0.4MM SKIN THICKNESS



**THERMAL**  
**PANEL SOLUTIONS**  
THE TRUSTED NAME IN CONTROLLED ENVIRONMENTS

## Description:

50mm / 2"  
 EPS-FR Panel



## Skin Finish:

Surfmist / Surfmist  
 Pale Eucalypt / Surfmist  
 Custom

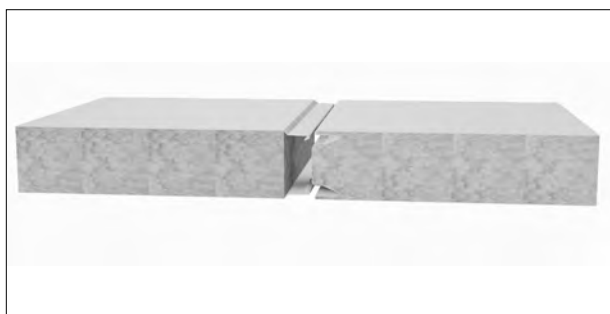
## Product Code:

1244  
 1244-P-W

## Unit:

mt  
 mt  
 mt

75mm / 3"  
 EPS-FR Panel

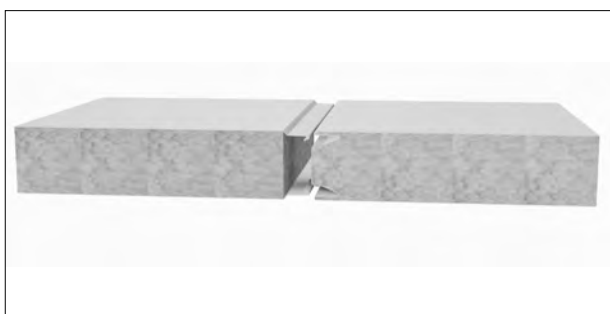


Surfmist / Surfmist  
 Pale Eucalypt / Surfmist  
 Custom

1344  
 1344-P-W

mt  
 mt  
 mt

100mm / 4"  
 EPS-FR Panel

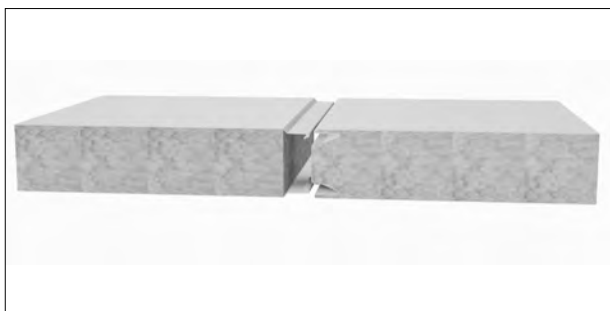


Surfmist / Surfmist  
 Pale Eucalypt / Surfmist  
 Custom

1444  
 1444-P-W

mt  
 mt  
 mt

125mm / 5"  
 EPS-FR Panel



Surfmist / Surfmist  
 Pale Eucalypt / Surfmist  
 Custom

1544  
 1544-P-W

mt  
 mt  
 mt

# EPS-FR PANEL

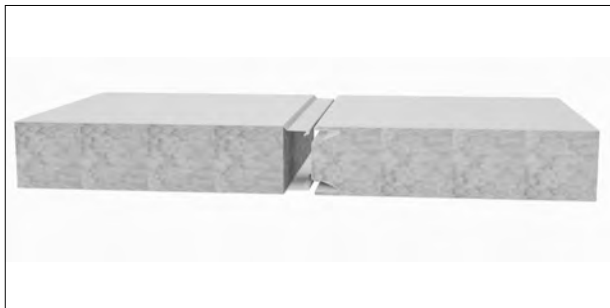
0.4MM SKIN THICKNESS



**THERMAL**  
**PANEL SOLUTIONS**  
THE TRUSTED NAME IN CONTROLLED ENVIRONMENTS

## Description:

150mm / 6"  
 EPS-FR Panel



## Skin Finish:

Surfmist / Surfmist  
 Pale Eucalypt / Surfmist  
 Custom

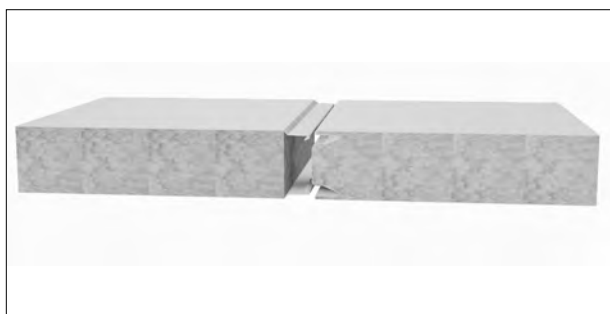
## Product Code:

1644  
 1644-P-W

## Unit:

mt  
 mt  
 mt

175mm / 7"  
 EPS-FR Panel

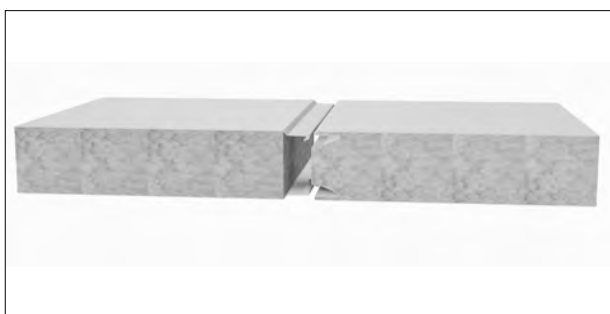


Surfmist / Surfmist  
 Pale Eucalypt / Surfmist  
 Custom

1744  
 1744-P-W

mt  
 mt  
 mt

200mm / 8"  
 EPS-FR Panel

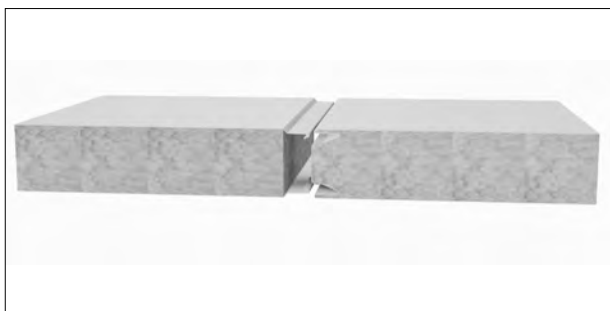


Surfmist / Surfmist  
 Pale Eucalypt / Surfmist  
 Custom

1844  
 1844-P-W

mt  
 mt  
 mt

225mm / 9"  
 EPS-FR Panel



Surfmist / Surfmist  
 Pale Eucalypt / Surfmist  
 Custom

1944  
 1944-P-W

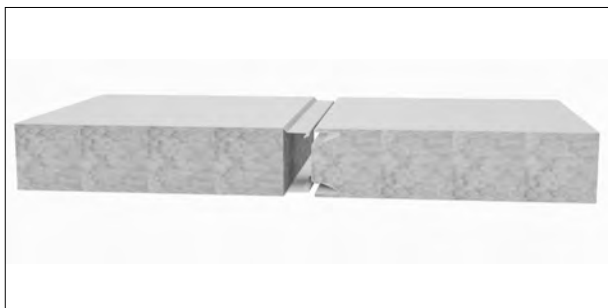
mt  
 mt  
 mt

# EPS-FR PANEL

0.4MM SKIN THICKNESS



**THERMAL**  
**PANEL SOLUTIONS**  
THE TRUSTED NAME IN CONTROLLED ENVIRONMENTS



## Description:

250mm / 10"  
 EPS-FR Panel

## Skin Finish:

Surfmist / Surfmist  
 Pale Eucalypt / Surfmist  
 Custom

## Product Code:

1044  
 1044-P-W

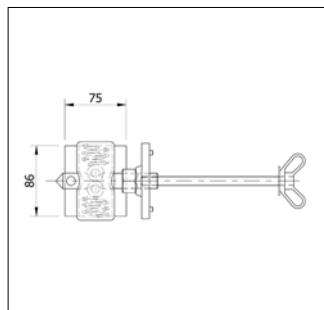
## Unit:

mt  
 mt  
 mt

# ACCESSORIES



**THERMAL**  
**PANEL SOLUTIONS**  
THE TRUSTED NAME IN CONTROLLED ENVIRONMENTS



## Description:

Roller Catch  
 Aluminium

## Finish:

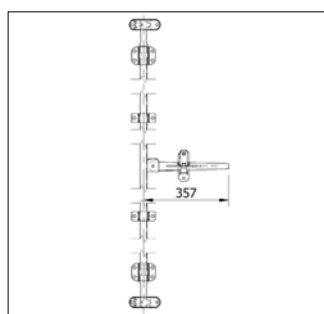
Mill  
 Surfmist

## Product Code:

3409

## Unit:

Ea

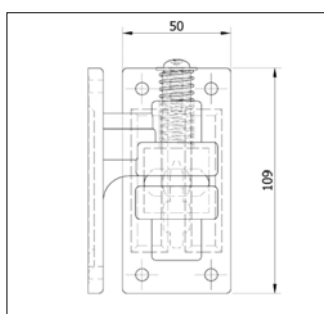
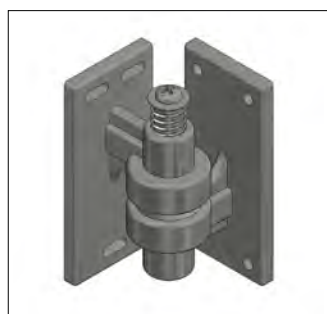


Camlock Medium Duty  
 Steel

Galvanised

3409-Camlock

Ea

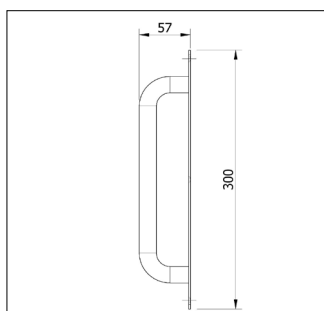


Rising Hinge  
 Aluminium

Mill  
 Surfmist

3410

Ea



Straight D Handle  
 Stainless Steel

-

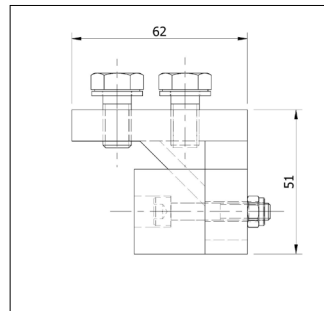
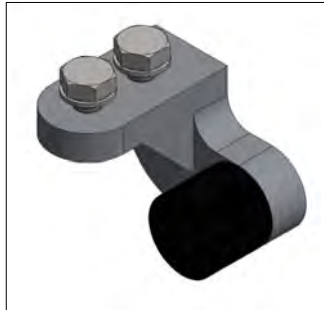
3411-Poly

Ea

# ACCESSORIES



**THERMAL**  
**PANEL SOLUTIONS**  
THE TRUSTED NAME IN CONTROLLED ENVIRONMENTS



## Description:

Track Stop  
 Right Hand  
 Aluminium

## Finish:

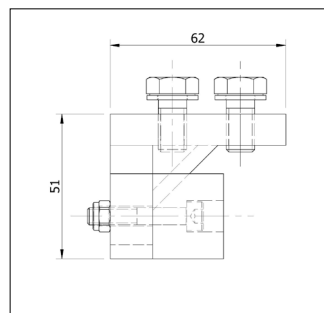
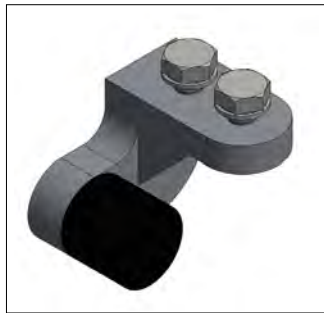
Mill  
 Surfmist

## Product Code:

3412

## Unit:

Ea

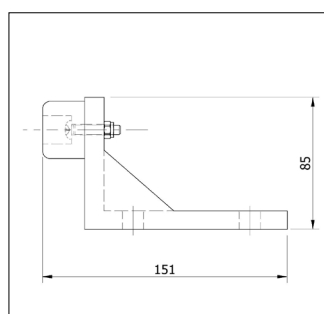
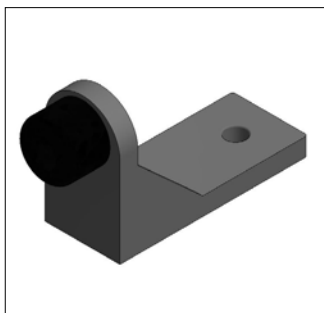


Track Stop  
 Left Hand  
 Aluminium

Mill  
 Surfmist

3413

Ea

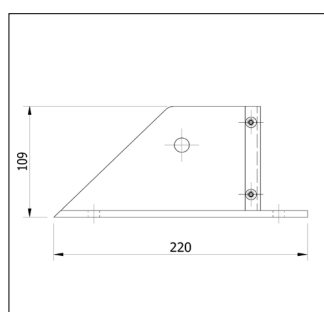


Floor Stop  
 Aluminium

Mill

3414

Ea



Commercial Wheel Bracket  
 Right Hand  
 Aluminium

Mill  
 Surfmist

3416

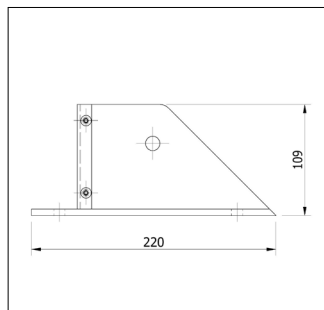
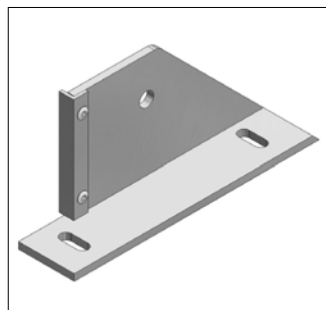
Ea



# ACCESSORIES



**THERMAL**  
**PANEL SOLUTIONS**  
THE TRUSTED NAME IN CONTROLLED ENVIRONMENTS



## Description:

Commercial Wheel Bracket  
 Left Hand  
 Aluminium

## Finish:

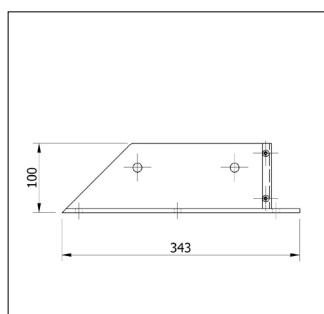
Mill  
 Surfmist

## Product Code:

3417

## Unit:

Ea

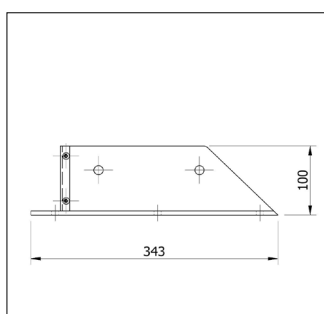
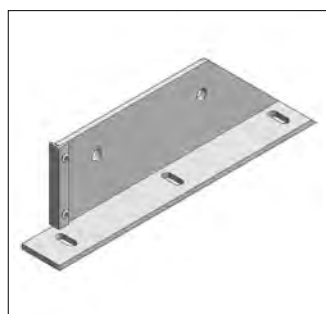


Industrial Wheel Bracket  
 Right Hand  
 Aluminium

Mill  
 Surfmist

3418

Ea

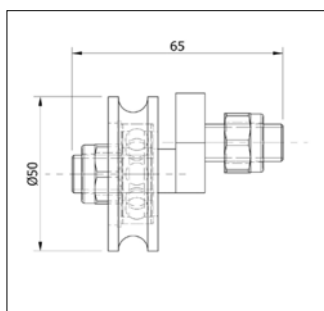
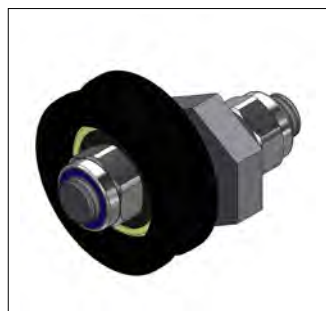


Industrial Wheel Bracket  
 Left Hand  
 Aluminium

Mill  
 Surfmist

3419

Ea



Eccentric Cam & Wheel  
 Stainless Steel / Nylon

-

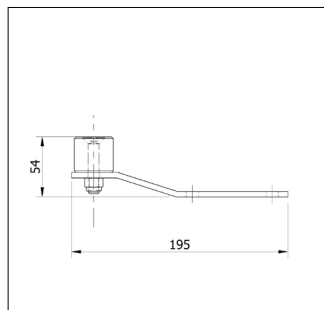
3420

Ea

# ACCESSORIES



**THERMAL**  
**PANEL SOLUTIONS**  
THE TRUSTED NAME IN CONTROLLED ENVIRONMENTS



## Description:

Silless Roller Guide  
 Stainless Steel / Nylon

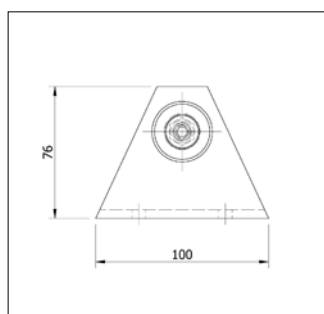
## Finish:

## Product Code:

3421

## Unit:

Ea

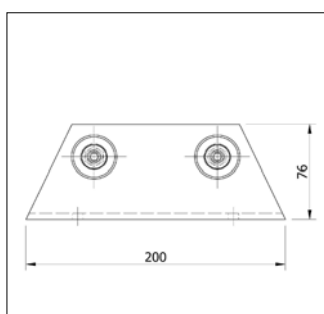


Sill Type Roller Guide  
 Centre  
 Aluminium / Nylon

Mill

3422-C

Ea

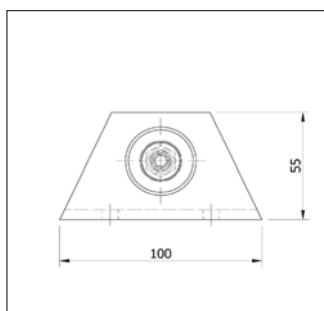


Sill Type Roller Guide  
 Double  
 Aluminium / Nylon

Mill

3422-D

Ea



Sill Type Roller Guide  
 High  
 Aluminium / Nylon

Mill

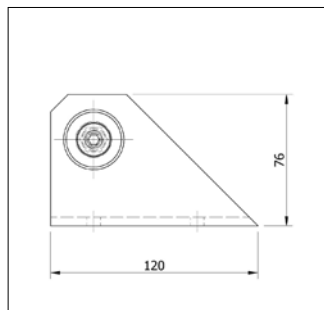
3422-H

Ea

# ACCESSORIES



**THERMAL**  
**PANEL SOLUTIONS**  
THE TRUSTED NAME IN CONTROLLED ENVIRONMENTS



## Description:

Sill Type Roller Guide  
 Left Hand  
 Aluminium / Nylon

## Finish:

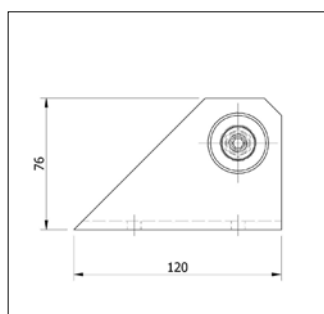
Mill

## Product Code:

3422-L

## Unit:

Ea

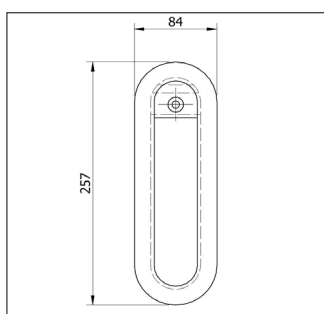
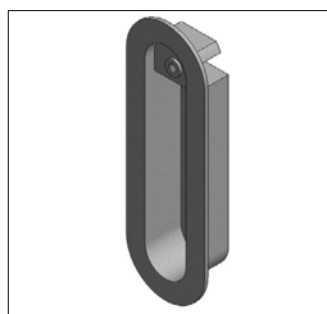


Sill Type Roller Guide  
 Right Hand  
 Aluminium / Nylon

Mill

3422-R

Ea

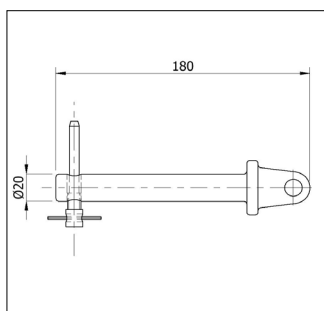


Internal Pocket  
 Aluminium

Mill

3423

Ea



Lock Pin & Release Pin  
 Aluminium

Mill  
 Surfmist

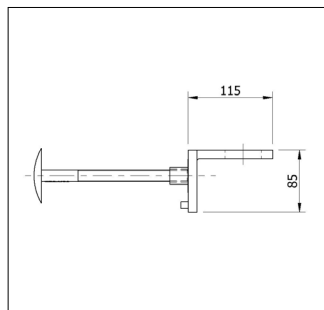
3424

Ea

# ACCESSORIES



**THERMAL**  
**PANEL SOLUTIONS**  
THE TRUSTED NAME IN CONTROLLED ENVIRONMENTS



## Description:

Lock Hasp Mushroom Bolt  
 16x200mm  
 Aluminium

## Finish:

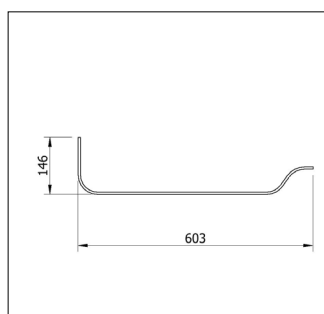
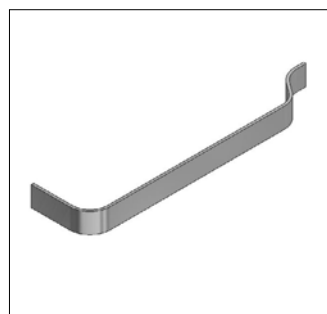
Mill

## Product Code:

3425-MB-200

## Unit:

Ea

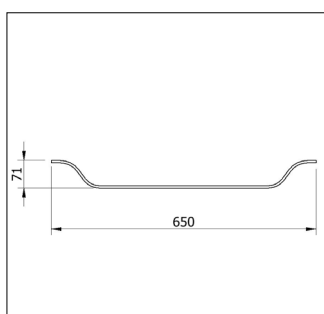
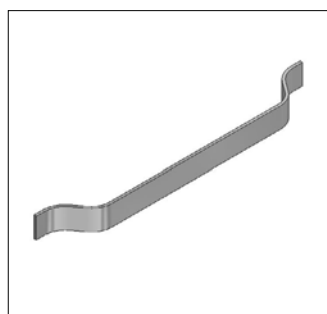


Bar Handle  
 Aluminium

Mill  
 Surfmist

3426

Ea

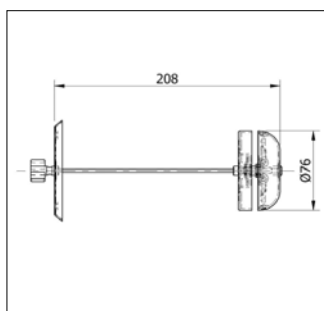


Bar Handle  
 Bi-Part Door  
 Aluminium

Mill  
 Surfmist

3426-BI

Ea



Door Bell  
 Chrome Plated Brass

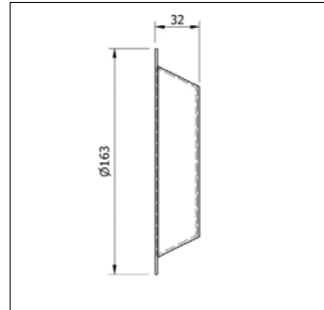
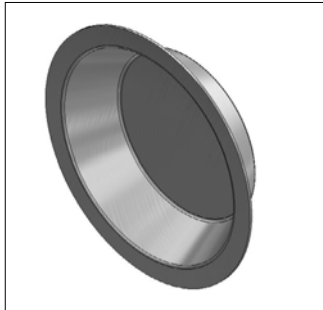
3430

Ea

# ACCESSORIES



**THERMAL**  
**PANEL SOLUTIONS**  
THE TRUSTED NAME IN CONTROLLED ENVIRONMENTS



## Description:

Door Bell Recess  
 Aluminium

## Finish:

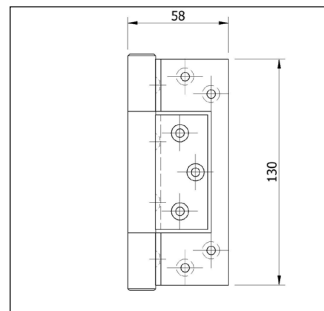
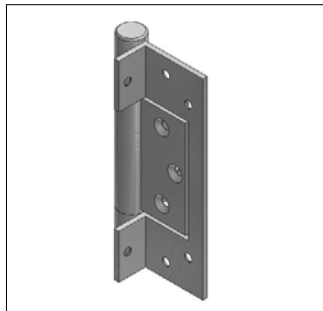
Mill

## Product Code:

3431

## Unit:

Ea

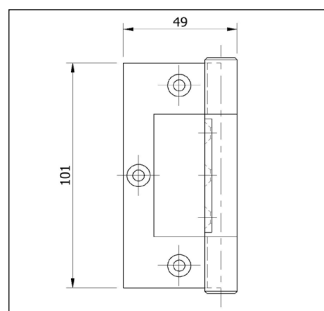
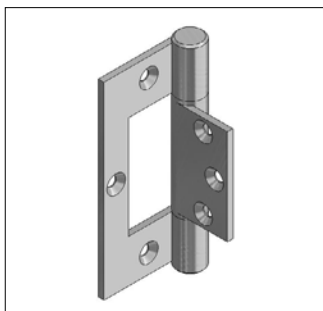


Fast Fix Hinge D104W  
 Aluminium

Anodised  
 Surfmist

3480

Ea

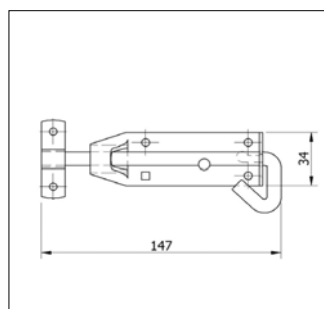
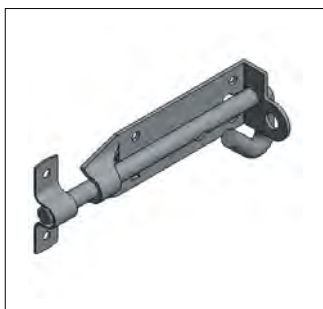


Butt Hinge DH9  
 Aluminium

Anodised  
 Surfmist

3481A

Ea



Pad Bolt  
 150x10mm  
 Steel

Zinc Plated

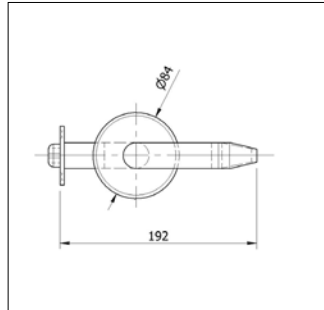
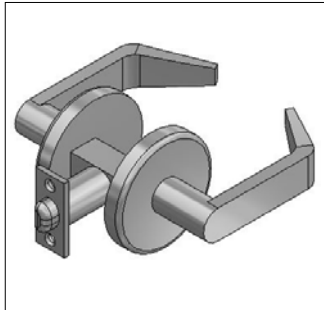
3490-B-150-10

Ea

# ACCESSORIES



**THERMAL**  
**PANEL SOLUTIONS**  
THE TRUSTED NAME IN CONTROLLED ENVIRONMENTS



## Description:

## Finish:

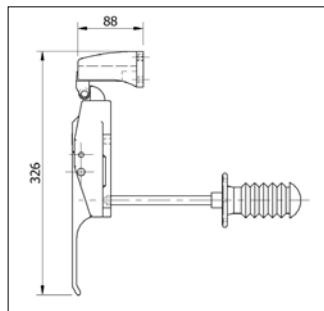
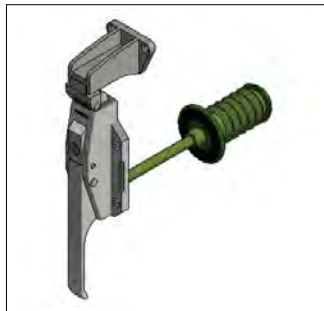
## Product Code:

## Unit:

6082 Passage Set Lever Handle  
 Stainless Steel

3490-LHS6082

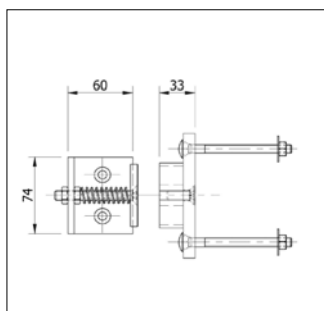
Ea



Coolmax Lever Latch Set  
 63mm Strike  
 Stainless Steel

3500-CMX

Ea

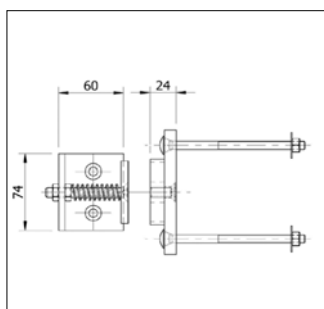
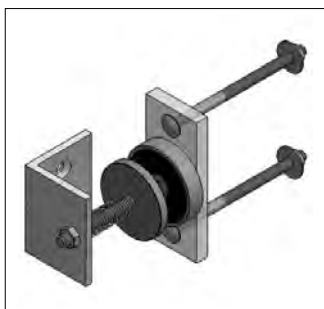


B2 Magnet Lock Assembly  
 Hinge Door  
 Aluminium / Plastic

Mill

3509

Ea



B1 Magnet Lock Assembly  
 Hinge Door  
 Aluminium / Plastic

Mill

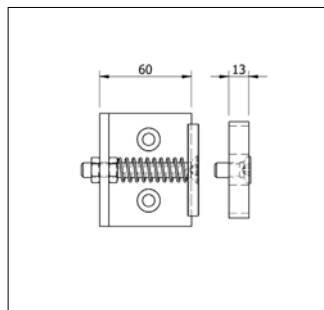
3509-B1

Ea

# ACCESSORIES



**THERMAL**  
**PANEL SOLUTIONS**  
THE TRUSTED NAME IN CONTROLLED ENVIRONMENTS



## Description:

B1 Magnet Lock Assembly  
 Slide Door Light Duty  
 Aluminium

## Finish:

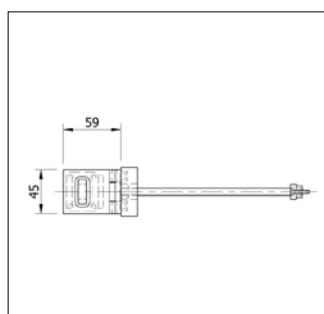
Mill

## Product Code:

3509-LD

## Unit:

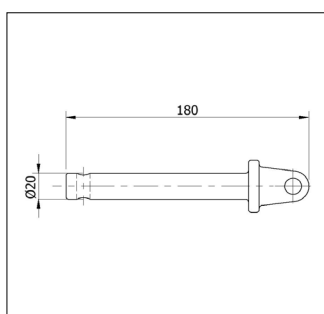
Ea



Hasp & Staple Assembly  
 Chrome Plated Brass

3511

Ea

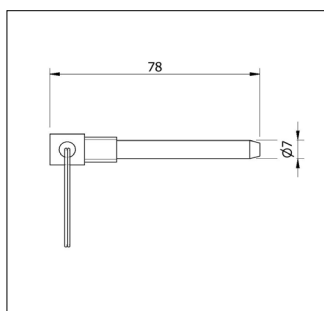


Lock Pin  
 20mm Rod  
 Aluminium

Mill  
 Surfmist

3525

Ea



Key Ring Locking Pin  
 Aluminium

Mill  
 Surfmist

3527

Ea